

YOUR 2025 NCPRD

FALL *Discovery Guide*

**NCPRD RESIDENT
REGISTRATION DATE:
OPENS AUG. 5 AT NOON**

**NON-RESIDENT
REGISTRATION DATE:
OPENS AUG. 12 AT NOON**

ncprd.org/discovery-guide



NORTH CLACKAMAS
PARKS & RECREATION DISTRICT





TABLE OF CONTENTS

District Information	2-3
Additional Information	4
Registration Information	5
District Map	6-7
Rentals.	8
New Website	9
Featured Projects	10-11
Events.	12-13

AQUATIC PARK

Big Surf	14
Fitness Programs	14-15
Swim Lessons	16-19

MILWAUKIE COMMUNITY CENTER

Adult Programs	20-26
Community Programs	27-29
Youth Programs	30-31

SPORT LEAGUES

Adult Sports	32
Youth Sports	33-35

FOLLOW US ON SOCIAL MEDIA!



@ncprd



@ncprd



@ncprdparks

DISTRICT INFORMATION

BOARD OF DIRECTORS

NCPRD is governed by the five-member Board of County Commissioners for Clackamas County, acting as the Board of Directors for NCPRD.

MEMBERS

Craig Roberts, *Chair*
Ben West
Martha Schrader
Paul Savas
Diana Helm

DISTRICT ADVISORY BOARD

A group of citizen volunteers makes up the District Advisory Committee (DAC) and provides recommendations to the Board of Directors on the design, planning, and development of parks and recreational programs in the District.

MEMBERS

Jeanette DeCastro, *Chair*
Mark Elliott, *Vice-Chair*
Daniel Diehl
Grover Bornefeld
Joel Bergman
Joshua Fisher
Lisa Batey
Linda Neumann
James Sherman
Sheila Shaw

NCPRD LEADERSHIP

Kia Selley, *Director*
Kandi Ho, *Recreation Services Director*
Erin Reome, *Planning and Development Director*

NCPRD ADMINISTRATION OFFICES

3811 S.E. Concord Road,
Milwaukie, OR 97267

Main Line: 503-742-4348

Email: info@ncprd.com

ABOUT NCPRD

North Clackamas Parks and Recreation District (NCPRD) is a service district of Clackamas County dedicated to providing exceptional parks and recreation programs, facilities, and services. Voters approved the formation of the District in 1990 because they saw the need for greater parks and recreation services in the north end of the county. The District – which serves more than 105,000 residents in a 27-square mile area – includes the City of Milwaukie and a large area of unincorporated Clackamas County.

The district features 36 developed parks, 7 natural areas, and a network of trails including the 6-mile Trolley Trail. Residents also enjoy access to unique facilities like North Clackamas Aquatic Park and Milwaukie Community Center. Through protected green spaces and a wide variety of recreational programs, NCPRD provides opportunities for all ages to connect, stay active, and explore the outdoors.

OUR MISSION

To enrich community vitality and promote healthy living through parks and recreation.

OUR VISION

Enhancing and connecting your community by providing exceptional parks and recreation opportunities for all.

LAND ACKNOWLEDGEMENT

What we now call Clackamas County is the traditional lands and waterways of the Clackamas, Chinook Bands, Kalapuya, Kathlamet, Molalla, Multnomah, Tualatin, Tumwater, Wasco and many other tribes of the Willamette Valley and Western Oregon. The Indigenous people lived, traded, and navigated along great rivers and tributaries presently named the Clackamas, Molalla, Pudding, Sandy, and Willamette. Many of the original inhabitants of this land died from disease, war, and other conflicts. Those that survived these tragedies were forcibly removed and relocated by European settlers and the United States government because of the land's value. Today, their descendants live on, still carrying on the traditions and cultures of their ancestors.

We honor the Native American people of Clackamas County as a vibrant, foundational, and integral part of our community here today. We thank those who have connection to this land and serve as stewards, working to ensure our ecosystem stays balanced and healthy.

OUR COMMITMENT TO DIVERSITY, EQUITY, INCLUSION, & ACCESSIBILITY

North Clackamas Parks and Recreation District is committed to creating an inclusive and equitable environment where everyone—regardless of background—can thrive. We believe diversity strengthens our community and ensures that our parks, programs, and services are welcoming, accessible, and reflective of the people we serve.

TRANSLATION SERVICES

North Clackamas Parks and Recreation District offers translation services in 82 different languages. Using real-time language translation technology, in partnership with Pocketalk, our staff is able to bridge the language divide with residents to remove language barriers to programs and services.

To request translation services, visit the front desk at an NCPRD facility or email info@ncprd.com. Find more information at ncprd.org/translation-services.



EVERYONE BELONGS

Let's talk!

ADDITIONAL INFORMATION

ADAPTIVE AND INCLUSIVE SERVICES

NCPRD welcomes individuals of all abilities to participate in and enjoy programs, facilities, parks, and open spaces. NCPRD aims to support the unique needs of each individual by delivering accessible recreation opportunities and quality-of-life enhancing services. Accommodation requests can be made for people with disabilities to get individualized help in accessing NCPRD programs and activities. There are no extra costs or fees associated with inclusion or accommodation services. Please submit accommodation requests at least two weeks before the date needed. For more information and to request an accommodation, email recreation@ncprd.com.

SCHOLARSHIPS

District residents can apply for scholarships to participate in many classes and activities. Applicants who meet income guidelines are eligible for scholarship assistance for up to three program areas per person per year. Scholarships need to be pre-approved and are applied to future registrations. If you want information about receiving a scholarship, visit ncprd.org/scholarships or call:

For Recreation - **503-794-8092**
For Aquatics - **503-794-8080 ext. 0**
For Sports - **503-794-3877**

PHOTOGRAPHY

NCPRD takes photographs of people enjoying our programs, events, parks, and facilities. These photographs are used for promotional purposes, including placement in publications, collateral, and on the NCPRD website. The photographs are used at the discretion of the Parks District and become the sole property of the North Clackamas Parks and Recreation District. If there is a photo you would like removed from future use, please email info@ncprd.com.

GIFT CERTIFICATES

Consider giving an NCPRD gift certificate for recreation programs, fitness classes, and facility use. Certificates can be purchased at the North Clackamas Aquatic Park or the Milwaukie Community Center Recreation Office.

REFUND POLICY

Facility rentals: Cancellations made at least four weeks prior to the reserved date will receive a refund, minus a 20 percent or \$50 processing fee (whichever is less). Cancellations made less than four weeks from the reserved date will receive a 50 percent refund minus 20 percent (of refund amount) or \$50 processing fee (whichever is less).

Processing fee will be waived if the participant chooses to transfer or apply credit to a future rental date. Transfer fee may apply. Processing fee is applied to the amount of refund and not to exceed \$50.

Programs and activities: If a participant cancels their registration at least two week (fourteen days) prior to the start of a program, they will receive a full refund or credit minus a \$15 processing fee per transaction, whichever the registrant prefers. Requests made between fourteen days and the start date of the program may be eligible for a credit minus the \$15 administrative fee per registration.

Refunds, credits, and/or make-up classes are not available after a program has begun. If an event or program is canceled or changed by NCPRD, a full credit or refund will be issued.

JOBS

Make a positive impact in your community by working at NCPRD. Be part of a group of passionate individuals who value collaboration, safety, respect, and inclusion. Open positions are posted online, including details on qualifications, compensation, benefits, and more. Learn more and apply at ncprd.org/jobs.

VOLUNTEER

NCPRD offers a variety of volunteer positions throughout the district. Choose from opportunities that suit your schedule and interests, such as beautifying parks, restoring habitat in natural areas, supporting programs at Milwaukie Community Center, and participating in special events. For more information, visit ncprd.org/volunteer.

REGISTRATION INFORMATION

NCPRD RESIDENT REGISTRATION DATE:

OPENS AUG. 5 AT NOON

NON-RESIDENT REGISTRATION DATE:

OPENS AUG. 12 AT NOON

HOW TO REGISTER

If you haven't already, create or update your account before registration opens by visiting **ncprd.org/registration**. Browse classes and programs using this Discovery Guide or by visiting the NCPRD website. See information on scholarships and refunds on page 4 of this Discovery Guide. Registering is easy!



ONLINE AT NCPRD.ORG

Search for classes by age, category, location or keyword - or narrow your search by specific activity.



PHONE

For Recreation - 503-794-8092
For Aquatics - 503-794-8080 ext. 0
For Sports - 503-794-3877



IN PERSON

Visit Milwaukie Community Center or North Clackamas Aquatic Park for walk-in registration during business hours.

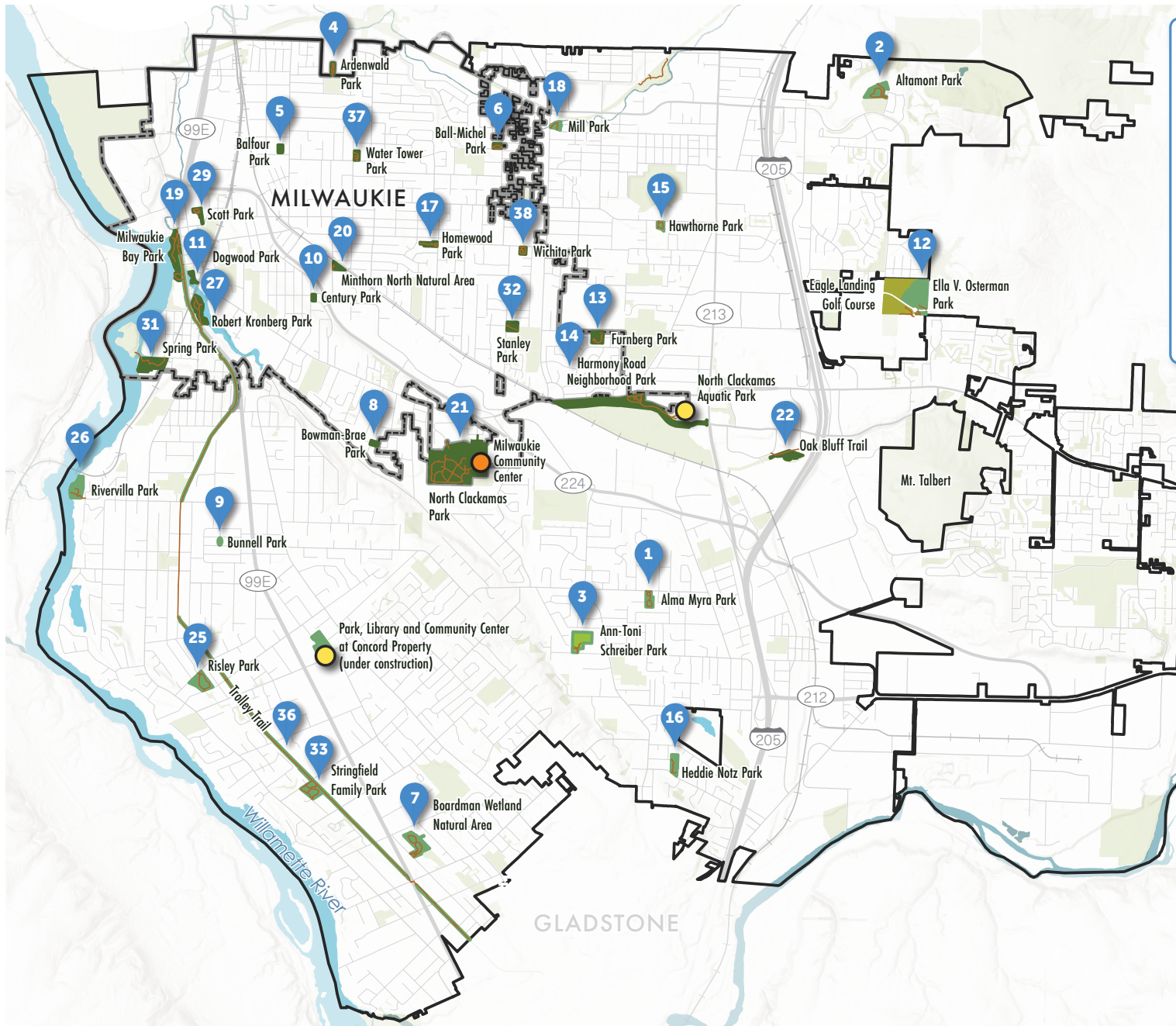


Scan this QR code to view activities and register online.

ARE YOU IN DISTRICT?

For most fee-based programs, there will be two numbers listed: one for NCPRD residents, and the other for those who live outside the District. For information on District boundaries, see the map on pages 6-7. You can also visit **ncprd.org** to verify residency by selecting "Are you in district?".

NCPRD DISTRICT MAP



Milwaukie Community Center

5440 S.E. Kellogg Creek Dr.
Milwaukie, OR 97222
503-653-8100












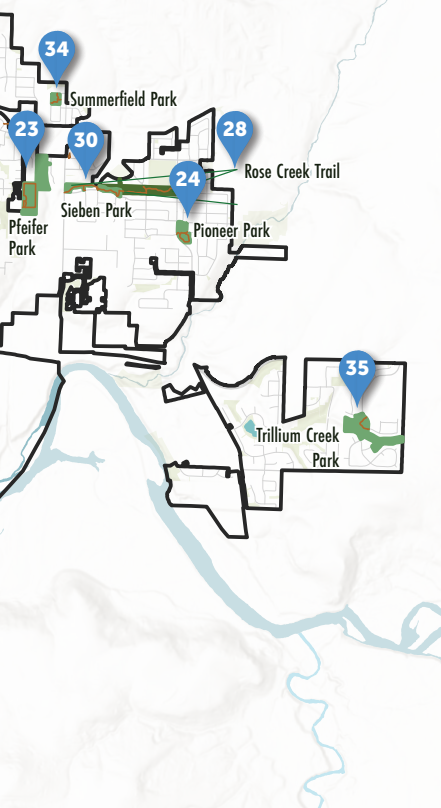
North Clackamas Aquatic Park

7300 S.E. Harmony Rd.
Milwaukie, OR 97222
503-557-SURF (7873)



LEGEND

-  NCPRD Boundary
-  City of Milwaukie
-  NCPRD Owned & Maintained
-  NCPRD Maintained
-  NCPRD Owned
-  *Non-NCPRD Open Spaces (Private and Public)
-  NCPRD Trails
-  NCPRD Owned Facilities
-  NCPRD Maintained Facilities



Concord Property (coming Fall 2025)

3811 S.E. Concord Rd.
Oak Grove, OR 97267

		Off-Street Parking	Playground	Restrooms	Shelter	Picnic Area	Ball Field	Soccer Field	Volleyball Court	Basketball Court	Tennis Courts	Pickleball Court	Trailhead/Access	Walking Path	Dog Park
1.	Alma Myra Park		■		■										
2.	Altamont Park		■		■										
3.	Ann-Toni Schreiber Park	■	■		■	■			■						
4.	Ardenwald Park		■	■	■									■	
5.	Balfour Park		■		■									■	
6.	Ball-Michel Park		■	■	■							■	■		
7.	Boardman Wetlands Nature Park	■	■		■							■	■		
8.	Bowman-Brae Park		■		■									■	
9.	Bunnell Park				■										
10.	Century Park		■		■				■	■					
11.	Dogwood Park											■			
12.	Ella V. Osterman Park		■	■	■										
13.	Furnberg Park	■	■		■									■	
14.	Harmony Road Neighborhood Park	■	■						■						
15.	Hawthorne Park		■		■										
16.	Heddie Notz Park		■		■									■	
17.	Homewood Park		■		■									■	
18.	Mill Park		■		■									■	
19.	Milwaukie Bay Park	■		■	■									■	
20.	Minthorn North Natural Area											■	■		
21.	North Clackamas Park	■	■	■	■	■		■						■	■
22.	Oak Bluff Trail											■	■		
23.	Pfeifer Park	■	■	■	■		■		■					■	
24.	Pioneer Park		■	■	■				■					■	
25.	Risley Park	■	■		■				■	■	■			■	
26.	Rivervilla Park	■		■	■									■	
27.	Robert Kronberg Park											■	■		
28.	Rose Creek Trail											■			
29.	Scott Park	■	■												
30.	Sieben Park				■										
31.	Spring Park	■	■		■							■	■		
32.	Stanley Park				■										
33.	Stringfield Family Park	■	■	■	■	■								■	
34.	Summerfield Park		■		■				■						
35.	Trillium Creek Park		■	■	■				■						
36.	Trolley Trail											■	■		
37.	Water Tower Park		■		■				■					■	
38.	Wichita Park		■		■										

RENTALS

Host your next event or gathering at an NCPRD facility. For rates, guidelines, and availability please call **503-794-8013** or email **rentals@ncprd.com**



MILWAUKIE COMMUNITY CENTER

5440 S.E. Kellogg Creek Dr.
Milwaukie, OR 97222

Milwaukie Community Center is available for private use, meetings, showers, reunions, parties, receptions, and other events. The Center features nine rooms of various sizes, including a banquet room with a large stage and audio equipment, and two kitchenettes. Whether you're looking to rent the entire facility or individual spaces, the Milwaukie Community Center offers flexible spaces and convenient amenities to meet your event needs.



SARA HITE ROSE GARDEN

5440 S.E. Kellogg Creek Dr.
Milwaukie, OR 97222

Sara Hite Rose Garden is a hidden gem nestled at the entrance of North Clackamas Park, just 20 minutes outside of Portland. The 1-acre, award-winning rose garden provides a beautiful and elegant backdrop for your ceremony, reception, or wedding. The Rose Garden features a large, covered gazebo and central red brick plaza that are surrounded by manicured rose beds and tall plantings for added privacy. The open plaza comfortably seats 200 guests and can flexibly accommodate a variety of layouts for your event.



NORTH CLACKAMAS PARK BALL FIELDS

5440 S.E. Kellogg Creek Dr.
Milwaukie, OR 97222

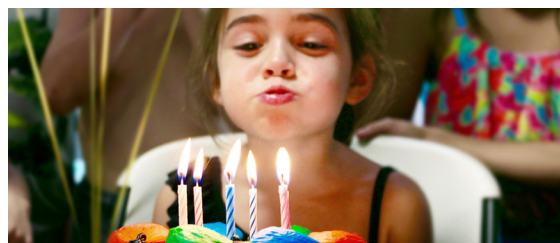
Looking for a place to host your next softball or baseball game? North Clackamas Park has four natural grass ball fields that are available for rent, with outfields ranging in distance from 210 to 280 ft. The complex also features wireless scoreboards, field lighting, shaded spectator seating, covered dugouts, permanent restrooms, and ample parking.



NORTH CLACKAMAS PARK PICNIC SHELTER & HORSE ARENA

5440 S.E. Kellogg Creek Dr.
Milwaukie, OR 97222

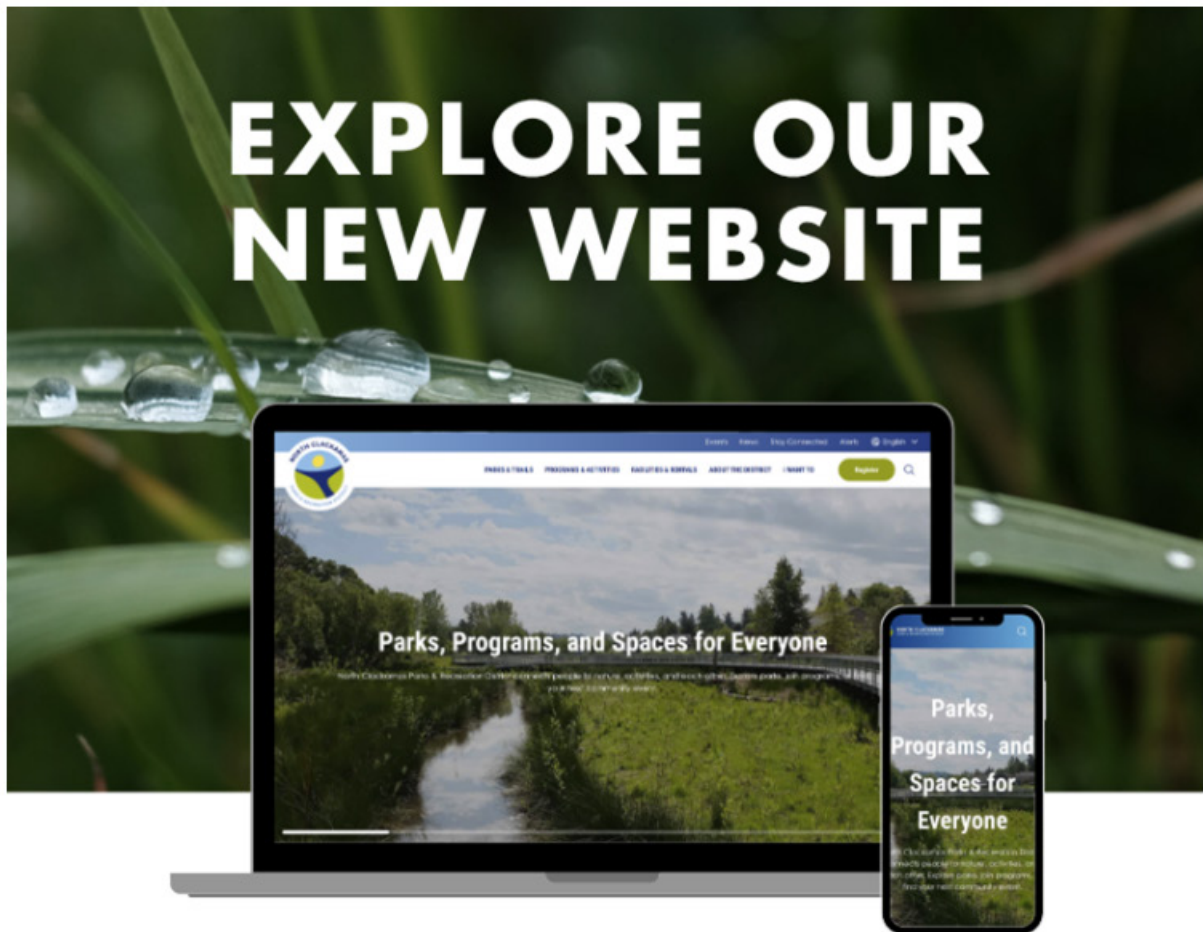
The covered picnic shelter and horse arena are available for rent at North Clackamas Park. Perfect for small to medium outdoor gatherings, the picnic shelter has a covered area with 24 picnic tables and accommodates 100 people (maximum). The gated horse arena is located in the southwest part of the 45-acre park and is approximately 100' x 180'.



NORTH CLACKAMAS AQUATIC PARK

7300 S.E. Harmony Rd.
Milwaukie, OR 97222

North Clackamas Aquatic Park is available for swim parties, pool rentals, and meetings. The Aquatic Park features six pools, including Oregon's largest wave pool, as well as three water slides and a 29-foot rock climbing wall. Additional rooms are available for small to medium gatherings, including birthday parties and corporate meetings.



We're thrilled to announce that we've redesigned the NCPRD website to make it easier for you to explore all the parks, programs, and events we have to offer!



NEW CLEANER LOOK

We've given our website a beautiful and modern makeover for an enjoyable browsing experience. We hope you'll find it visually appealing and fun to navigate.



EASIER NAVIGATION

Whether you're searching for activities or planning your next park adventure, our website is more user-friendly than ever. Finding what you need is now a breeze!



UPGRADES TO COME

There's still more to do. Stay tuned for additional improvements in the coming months. We're dedicated to making the site the best it can be for you.

VISIT NCPRD.ORG

Featured Projects



BRINGING NATURE TO JENNINGS LODGE

NCPRD and the Oregon City School District (OCSD) are cooperatively planning a neighborhood park on the Jennings Lodge Campus, which will provide new recreational opportunities and amenities to the community. We heard from over 760 residents on their hopes and needs for this site, which helped inform the final park design. This beautiful 1.9-acre park will offer residents of all ages and abilities the opportunity to step out of the urban environment and connect with the natural world. Park features include an expansive tree canopy, winding pathways, and two nature-inspired playgrounds with accessible play opportunities throughout.



UPDATE

Metro has awarded North Clackamas Parks and Recreation District a **\$1M Nature in Neighborhoods capital grant** for funding the construction of the new park at the Jennings Lodge Campus.

This project is on its way to becoming a reality!



ncprd.org/park-at-jennings-lodge-campus



Scan this QR code to view more information online.





A PARK, COMMUNITY CENTER & LIBRARY COME TO LIFE

After several years of thoughtful planning and community engagement, the Concord Property in Oak Lodge is poised to become the future site of a reimagined community center, a 1.6-acre park, and the new Oak Lodge Library. This integrated development will feature three dynamic facilities, providing extensive opportunities for recreation, education, enrichment, wellness, and social connection. NCPRD, in partnership with Clackamas County, is excited to make the community's vision for this site a reality and to breathe new life into the former school property.

SAVE THE DATE

GRAND OPENING OF NEW LIBRARY, PARK & COMMUNITY CENTER

Grand Opening Celebration

Saturday, October 18 | 11 a.m.-2 p.m.

3811 S.E. Concord Rd., Milwaukie OR



This is a special moment for our community — come explore the new spaces, enjoy family-friendly activities, and be part of the excitement as we mark this important milestone together.

FOOD | MUSIC | KIDS ACTIVITIES | OPENING CEREMONY

ncprd.org/concord-property-project



Scan this QR code to view
more information online.



Fall Events

1

FIESTA LATINA EN EL PARQUE

Join us for a free, family-friendly community festival celebrating Latino heritage and culture! Enjoy delicious food, live music, vibrant performances, children's activities, games—including Lotería—artisan vendors, and community resource booths. Entertainment includes performances by Barrio Mestizo, Ballet Folklórico Mitotiani, and mariachi singer Gemanereida.

Location: North Clackamas Park

Fee: FREE

Time/Date: noon-4 p.m. Sa 9/13

SPONSORED BY:



2

HOUSING AND SENIOR SERVICES FAIR

Come explore independent and assisted living communities, in-home care options, and many other resources for quality of life enhancement. Having many vendors in one place makes it easy and convenient to ask questions, make appointments, and get valuable information. To get more information about being a vendor, visit milwaukieccfoundation.org.

Location: Milwaukie Community Center

Fee: FREE

Time/Date: 10 a.m.-2 p.m. Th 10/2



3

TEEN NIGHTS

Grades 6-12. Looking for a fun night out and a chance to meet new friends? Teens are invited to join us for an evening of board games, Nintendo Switch, creative crafts, and rotating themed activities. Pizza, snacks, and refreshments will be available for purchase. Space is limited, so don't forget to register early!

Location: Concord Property

Fee: FREE

Time/Date: 6:30-8:30 p.m. F 10/10, 11/14, 12/12

2nd Friday of the Month:

10/10 Spooktacular Teen Night

11/14 Carnival Craze Teen Night

12/12 Holiday Hype: Ugly Sweater Showdown



4

GRAND OPENING OF NEW LIBRARY, PARK & COMMUNITY CENTER

This is a special moment for our community — come explore the new spaces, enjoy family-friendly activities, and be part of the excitement as we mark this important milestone together.

Location: Concord Property

Fee: FREE

Time/Date: 11 a.m.-2 p.m. Sa 10/18



5

BOO BASH CARNIVAL

Get ready for a spooktacular good time at our Boo Bash Carnival! This family-friendly event is perfect for children, ages 2-10, and anyone who wants to join us for a fa-boo-lous evening. Enjoy safe and fun trick-or-treating at our many booths, play classic carnival games with a Halloween twist, join the costume contest, and unleash your imagination with creepy, cute crafts. Costumes are encouraged, but feel free to join in on the fun however you'd like!

Location: Concord Property

Fee: \$4 NCPRD, non-resident \$5. Children under 2 free.

Time/Date: 4:30-7 p.m. Sa 10/25



6

TRADITIONAL THANKSGIVING DINNER

Gather with friends and family at the Milwaukie Community Center (MCC) for our Famous Thanksgiving Dinner hosted by the MCC Foundation. Enjoy roasted turkey, mashed potatoes, gravy, sweet potatoes, vegetables, rolls, and dessert. Seating is limited so get your tickets early! Tickets can be purchased at the MCC front desk or online at www.milwaukieeccfoundation.org. Beer and wine will be available for purchase at the event. All proceeds benefit Meals on Wheels at the Milwaukie Community Center. Tickets are available beginning Oct. 21; deadline for purchase is Nov. 15.

Location: Milwaukie Community Center

Fee: \$20 per adult, \$12 per child (12 and under)

Time/Date: 4-5:30 p.m. Su 11/23



7

WINTER CELEBRATIONS

This festive, family-friendly event explores and celebrates winter traditions from cultures across the globe, featuring interactive experiences for all ages. Enjoy music, games, hands-on activities, and delicious food as you discover the richness of seasonal celebrations worldwide. Browse unique gifts and handmade goods from local artisan vendors—perfect for holiday shopping. Don't miss the chance to meet Santa and Frosty, who will spread holiday magic and cheer!

Location: Concord Property

Fee: \$4 NCPRD, non-resident \$5. Children under 2 free.

Time/Date: 9:30 a.m.-noon Sa 12/6





Fall Events Calendar

See all upcoming events at ncprd.org/events and on **pages 12-13** of this guide.

SEP

- 13** FIESTA LATINA EN EL PARQUE
North Clackamas Park

OCT

- 2** HOUSING AND SENIOR SERVICES FAIR
Milwaukie Community Center
- 10** SPOOKTACULAR TEEN NIGHT
Concord Property
- 18** GRAND OPENING OF NEW LIBRARY, PARK & COMMUNITY CENTER
Concord Property
- 25** BOO BASH CARNIVAL
Concord Property

NOV

- 14** CARNIVAL CRAZE TEEN NIGHT
Concord Property
- 23** TRADITIONAL THANKSGIVING DINNER
Milwaukie Community Center

DEC

- 6** WINTER CELEBRATIONS
Concord Property
- 12** HOLIDAY HYPE: UGLY SWEATER SHOWDOWN TEEN NIGHT
Concord Property

